



# The Parish Visitor of Bethel Lutheran Church, Auburn, Massachusetts

January 2012

Volume LXVII

No. 1

Church Office: 508-832-3427

The Rev Katheryn Keene, Pastor: 617-721-2002 kkeene3@charter.net

Secretary: Ann Spinner: Email: [contact@bethelauburn.org](mailto:contact@bethelauburn.org)

Homepage: <http://www.bethelauburn.org/>

Twitter: <http://twitter.com/bethelauburn>

## START THE NEW YEAR AT WORSHIP!

### WORSHIP TIMES

8:00, 9:15 and 10:30 am Every Sunday

Education Hour 9:15 except 2<sup>nd</sup> Sunday Celebration Service Days

Wednesday at 5:30pm



### HIGHLIGHTS OF THE DECEMBER COUNCIL MEETING

- Voted to approve recommendations of Worship and Music Committee regarding Lenten season services.
- Budget Committee has been formed: Preston Sturdevant, Karl Krantz, Pastor Keene, Scott Baeder, and Brian Beck
- Voted to approve Transition Committee (follow up to Call committee): Tony Benvenuti, Lisa Khoury, Terry Hamilton, Gerry LaFleur, and MaryAnn Oakman. They will serve in an advisory, support capacity and assist with a formal mutual ministry review.
- There are vacant positions on the Finance Committee that need to be filled.
- Council extended sincere thanks to Cyndi Carley for her service to the Finance Committee and the Council and wish her well.
- Council extends sincere thanks to the Property Committee and to all the workers and volunteers who have devoted many hours and much effort towards the Parsonage renovations.

### FROM OUR FINANCIAL SECRETARY

Offering envelope boxes for 2012 are in the Narthex. Please pick them up next time you are in church.

Those people who we knew are to use online giving were not assigned envelope boxes. If you are among them and wish to make a special cash or check gift, please use a pew envelope and write on that what the gift is for.

If you don't see an envelope for you and you would like them, please call the church office and they will be assigned to you.

Thank you! Russell Harris

### NEW YEARS DAY

January 1<sup>st</sup> one service at 10:30am.

### THE EPIPHANY OF OUR LORD



TUESDAY - JAN. 6TH

Services at

12:15 AND 7:00PM

### SUNDAY SCHOOL PAGEANT

The Sunday School pageant "The First Christmas" will be held on January 8th at the 10:30 service. There will be no 9:15 service that day so the children can have a dress rehearsal. The children will have a rehearsal on Saturday Jan. 7th at 10:30am too.

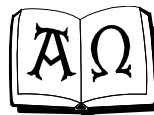


### ANNUAL MEETING

January 29th - 11:40am-1:00pm (approx.)

The Annual Meeting of the Congregation will be in the Parish Hall (west end) and we will approve reports; adopt a plan for ministry (a budget), elect Council members, a Nominating Committee for 2012, and elect Voters to the 2012 N.E. Synod Assembly. All Confirmed members of Bethel are eligible to vote and attend.

Videos for children will be shown in the Parish Hall (east) and volunteers are needed to stay with the children.



**Annual Reports due by December 31st!**

## WORSHIP AND MUSIC NEWS

### **Looking ahead to Lent**

The preliminary plans for Lent are in process. Ash Wednesday services will be held at 12:15 and 5:30. During the Wednesdays in Lent there will be a simple Eucharist service at 12:15 and Soup and Sandwich with a Lenten program and devotions beginning at 5:30. More detailed information will follow. Watch for news within the bulletin and in the February visitor



### **Installation Service for Pastor Katie**

The date for the Installation Service for Pastor Katie is still in the planning stages. The service will most likely be held sometime in February. Please watch for future news in the Parish Visitor and Sunday bulletins for specifics on the service. This will be a very special day for all who attend!

### **Communion Information**

Attention Bread Bakers: Fresh bread for Communion may be re-introduced in the near future. If you would be willing to be a bread baker, please call or email the church office and so we can create a schedule by season.

Gluten Free Wafers: In case you didn't know, gluten free wafers are available every week. Just let Pastor Katie know before the service or when you come to the rail and she approaches you for distribution. When intinction method of Communion is used, the Liturgical Assistant will be standing next to Pastor Katie with the gluten free wafers.

### **Cancellation for Inclement Weather**

Cancellation of services due to inclement weather will be announced on the following media outlets:

Television – WBZ Channel 4 and WCVB Channel 5

Website – WHDH Channel 7 is on internet only [www.whdh.com](http://www.whdh.com)

Radio – WSRS 96.1 FM or WTAG 580 AM

Cancellation will also be announced on Twitter.

We are in process of looking into other alternatives for communication.

**IMPORTANT: IF THE WEATHER/FORCAST IS SEVERE AND/OR YOU HAVE NO POWER, STAY HOME AND BE SAFE!**

### **Worship and Music Committee Meeting**

Our next meeting is January 9th following the late service. Our meetings are normally held at this time on the second Sunday of the month. If you are interested in joining this ministry, please let Nancy Fenton know.

## BETHEL PRESCHOOL'S OPEN HOUSE

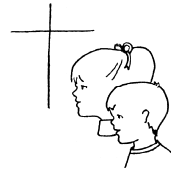
Thursday January 26th, 2012

12:30pm-2:30pm

(Snow date Tues. Jan. 31st)

Great chance to stop in to meet the teachers and see the school with your child.

For more information call Christine at 508-832-9411.



## JANUARY ANNIVERSARIES

If your Anniversary is missing please let us know - 832-3427. Thank You!

Roger & Judy Bohn	1/5/62	50
Mark & Karen Millay	1/19/85	
Alden & Bev Sampson	1/19/68	45
Lyndon & Lisa Ambruson	1/20/07	5
Daniel & Dawn Masakowski	1/25/03	

## PARISH VISITOR

Do you know an interesting fact or hidden saint among the members or friends of Bethel? Please call the church office 508-832-3427 or email [contactbethelauburn.org](mailto:contactbethelauburn.org). We will be collecting this information for a new section of the Parish Visitor.

## DO YOU HAVE AN E-MAIL ADDRESS?

PLEASE If you have an email address please send it to: [contact@bethelauburn.org](mailto:contact@bethelauburn.org). We'll be able to send you Information and updates if we have an updated list. Thanks You.

## CHURCH FAIR NEWS

The most recent total for the Church Fair was over \$5,220! Thanks to everyone who helped! More detailed news will be in the Annual Report, so please pick up your copy in late January. We expect to have additional news relating to the Fair in future Parish Visitors, but until then, we welcome your suggestions, etc. Thank you!

**JANUARY BIRTHDAYS**

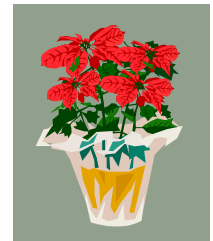
If your Birthday is missing please let us know - 832-3427. Thank You!

Beverly Perks-Ricciardone 1/1	MaKenna Oliveira 1/11	Brianna Gagnon 1/21	Dylan O'Mara 1/27
Lois Chinigo 1/3	Betty Stough 1/11	Scott Baeder 1/22	Kevin Ratcliffe 1/28
Nicholas Chunis 1/3	Roberta Briggs 1/12	Howard Evers 1/22	Mary Anne Oakman 1/30
Todd Hammond 1/3	Larry Olson 1/14	David Zona Jr. 1/22	Catherine Spanos 1/30
Howard Miller 1/3	Jessie White 1/16	Katie Holton 1/25	Amy Amato 1/31
Alyssa Johnson 1/4	Nicole Vernon 1/17	Kevin Olson 1/25	M. Leanne Carraher 1/31
Daniel Blash 1/5	Margaret Grout 1/18	David Fagan 1/26	Colin Fagan 1/31
Susan Malvey 1/6	Parker Plona 1/19	David Varg 1/26	Jordyn Oliveira 1/31
Joshua Fuller 1/8	Linda Vernon 1/20	Allison Berryman 1/27	
Paul Henry 1/10	Kim Boulanger 1/21	Jeff Cystoff 1/27	
Dennis Marcotte 1/10	Janet Foss 1/21	Kathryn Hauver 1/27	

**CHRISTMAS FLOWER FUND 2011****In Loving Memory of:**

Loved Ones  
 Loved Ones  
 Loved Ones  
 Tom Thompson  
 My parents, Iver & Minnie Lind  
 Roy Benoit, Sr. & Loretta St. Denis  
 Richard Krasawsky  
 Morrow  
 Husband, Larry  
 Parents, Jean & Ralph Foster  
 And Edna & Thomas Carraher  
 Husband, Harry Gadde  
 Parents, Harold & Violet Johnson  
 Mr. & Mrs. Evald Wennerberg & Mark  
 Kristen & Shayna  
 Marilyn Johnson  
 Carl H. Berg  
 Parents, Stanley & Edith Anderson  
 My parents, Ellen & Gilbert Nobert II  
 Of Husband, John "Dave" Briggs

by Judy Sampson  
 by the Baril family  
 by Karen Wambach  
 by Ruth Thompson  
 by Ruth Thompson  
 by Betty Benoit  
 by grandparents, Irene & Richard



by Mary Nelson  
 by Leanne & Thom Carraher

by Fran Gadde  
 by Sons, Harry, Bob & Stan  
 by Michelle Chunis  
 by Michelle Chunis  
 by husband Harold and daughter Debra & son Stephen  
 by Olive Berg  
 by Sue Kolton  
 by Judy Garneau  
 by Roberta Briggs

**In Honor of:**

Jesus's birthday  
 Thanksgiving for the hope & ministries of  
 Bethel Lutheran Church

by the Bercier family  
 by Katie Keene

**To the Glory of God given by:**

Dagny Stevens  
 Ruth Thompson

**FAITH COMMITMENT SUNDAY AND STEWARDSHIP UPDATE**

On Sunday, December 18th, we received Faith Commitments from members at the three services, and we thank all who have made a pledge for the coming year! Without your help and support, we cannot be the church we are called to be, nor do the work that Jesus has asked us to do. If you were not able to attend church that day, please send in your Faith Commitment cards as soon as possible, so we can include your planned support in our budget building process. The budget will be presented for congressional approval at the Annual Meeting on January 29, 2012. As they say in the Navy, "All Hands on Deck!" We look forward to your help to do God's work. Thank you for doing your part!

## CHRISTIAN EDUCATION NEWS

**We Need Help!** - The Christian Education Committee is looking for anyone who would like to spend a Saturday cleaning, dusting, organizing and categorizing of the Library in the Chapel. Please speak to Adam Hanks if interested. The more sign up the less time to complete. A date & time will be set by those who sign up. Thank You!

**New Group** - We are pleased to announce that a new high school discussion group is starting soon during the education hour on Sundays in the Youth Lounge. We will discuss a wide variety of topics including those that are important to you. Leaders are needed for this new group. Please contact Adam Hanks at arhanks1985@hotmail.com or 508-248-5097 if interested! Refreshments will be provided! Please join us!

**Education Opportunity for Juniors** - The Christian Education Committee is looking any high school junior looking to attend college for opportunity to attend Wittenberg University, a liberal arts university in Springfield, Ohio, with the Martin Luther Scholarship Award. Wittenberg University has been affiliated with the Lutheran church since its founding in 1845. The Martin Luther Scholar Award is given to reward an outstanding Lutheran student with an \$80,000 academic award. The Christian Education Committee has been given the opportunity to nominate a high school junior. If any juniors are interested, please see Adam Hanks for further information.

**Adult Education** - Bob Fenby currently leads a book study on Sunday mornings from 9:15 – 10:15 (during the education hour) downstairs in the Adult Education room. Please speak to him if interested!

**Did You Know** - Bethel has a Library full of resources from Bibles, hymnals, devotional books, and more! We are in the process of cleaning and organizing to make it more accessible to you, so please do not mind our appearance. If you do borrow something, please return it so that others may also have a chance to use it. Thank You!

### **January Confirmation Schedule:**

<u>Grade</u>	<u>Date</u>	<u>Time</u>	<u>Lesson</u>
<b><u>Grade 6</u></b>	1/8/12	6:30 - 7:45	Ruth
	1/15/12	6:30 - 7:45	Samuel & Saul
	1/22/12	6:30 - 7:45	King David
	1/29/12	6:30 - 7:45	David & Nathan
<b><u>Grade 7</u></b>	1/8/12	6:30 - 7:45	The Rich Man and Lazarus
	1/15/12	6:30 - 7:45	Sheep and Goats
	1/22/12	6:30 - 7:45	The Parable of the Vineyard
	1/29/12	6:30 - 7:45	The Last Supper
<b><u>Grade 8</u></b>	1/8/12	6:30 - 7:45	Exploring Article 3
	1/15/12	6:30 - 7:45	Seasons & Colors of the Church
	1/22/12	6:30 - 7:45	World Religions
	1/29/12	6:30 - 7:45	Christian Denominations
<b><u>Grade 9</u></b>	1/15/12	6:30 - 7:45	Unit 2: Church History (Part 2)

**DON'T FORGET TO FILL OUT YOUR FAITH PROMISE!**

**SOCIAL MINISTRY MISSION**  
**MINISTRY EVENTS**

Wishing you and your families a Happy, Healthy, Spirit filled New Year! As you meet challenges and difficulties during the upcoming year, remember that the social ministry committee members working with Pastor Keene on behalf of the congregation are here to help in times of need!

**Local level Ministry**

**Teen Living Center** - Christmas baskets containing toiletry supplies/towels were provided to TLC residents in time for their Christmas party.

**Christmas Gift tag project** - Three families with a total of seven children were adopted this Christmas by the congregation of Bethel Lutheran. Approx. 37 gifts which included Grocery store gift cards and a gift for the mom and/or dad of these families were delivered to Auburn Youth and Family Services. Bethel Lutheran is blessed to have so many loving, giving members of the congregation who are willing to be a blessing to others.

**Future events**

Mark your calendars! Annual Ham & Bean supper to benefit ELCA Hunger Appeal to be held on Sunday, March 25th at 5 pm in Voosen Hall.

No social ministry meeting in January-next meeting Tues February 7th at 6 pm All are welcome!!

**9th Grade Confirmation will continue on Sunday January, 15th  
6:30 - 8:00**

**ALTAR FLOWERS FOR 2012**

The following dates are still open for the first quarter of 2012; 1/29, 2/5, 2/19 and 4/29.

There are also many other dates. Please sign up on the Flower Chart in the Narthex. **Only one person per Sunday.** Cost is about \$30.00 for 2 bouquets billed directly from Berg Florist. All bouquets will be donated to shut in unless you pick

them up by Monday morning or call the church office and let us know.



**COUPLES GROUP PLANS**

**Save the Dates**

**Jan. 14 - Epiphany Party** at Pastor Paul & Carolyn Henry's home – 6:30pm. Yankee Swap. Bring 2 gifts, 1 serious, one funny, an appetizer or dessert and your beverage of choice. Call the Henry's at 508-892-5411 to let them know if you are attending this event. It is always a great time. Any questions call Shirley Connor at: 508-754-6735



**Feb. 10 - Movie Night:** at Bill and Shirley Connor's home. Bring an appetizer or dessert and your beverage of choice. 6:30pm. Movie will start at 7:30pm. This evening will have a Valentine's Day theme! After the movie, we will discuss plans for the rest of the year (March – September). Bring your thoughts and ideas!

If anyone has any questions regarding the above, please call Shirley at 508-754-6735.

**MEN'S GROUP**

A Happy New Year to one and all. On Tuesday January 10th we will be going out for Chinese Food Buffet Style, location as of yet unknown. Sign up sheet is in the Narthex. Meet at Church at 6:00 to Car Pool.



**DINE OUT LADIES (DOL's!)**



January 10<sup>th</sup> at 6pm at "Oxford Casual Dining" Rte 12, Oxford. Meet at the restaurant - each person is responsible for the cost of their meal. Sign up in the Narthex.

**PRAYER LIST**

Please put the name of an addition or deletions from our prayer in writing and put it into the offering plate or call the church office so it can be included or deleted from next week's bulletin. Having it written down will help make sure the spelling is correct. Thank you.

PASTORAL ACTS

Eternal Life: Our Sympathy to the family & friends of Diane M. Gedenberg Hoff and Paul Lambert, who have entered Eternal Life since our last Parish Visitor. May God comfort all who mourn.

PARSONAGE REPAIR GIFTS

A Parsonage Repair gift has been given in memory of Harry Gadde by Frances Gadde.

SEMINARIAN FUND GIFTS

A Seminarian fund gift has been given in memory of Steven Hagglund by June Forsberg Moniz.

MEMORIAL FUND GIFTS

A Memorial fund gift has been given in memory of Vera Downey by Frances Gadde.

SPECAIL GIFTS

A special gift has been given in memory of Florence Olson and Betty Becker by Michelle Chunis.

NEW 2012 PRAYER LIST

All names on the prayer list, except members AND those added in December have been cleared. If you want a name to stay on contact the Church Office at 508-832-3427 or contact@bethelauburn.org. This will be done twice a year now with the second time July 1st.

PRAYER LIST

*Members names are underlined: Bold face are newly added as of 12/28/11*  
Debbie Brown, Pat Callahan, Janine Colgiovanni, Deborah Courtney, Linda Doherty, Carson Domey, **Jill Ducat**, Linda Fabrizius, Jack Fenton, Liesl Voosen Fields, Janet Foss, Frances Fox, Francis Gadde, Cathy Gervais, Harold Haas, Pastor Richard Hurst, Tom Jahosky, Barbara Johnson, Mary E. Johnson, Olof Johnson, Diane Ela-Lauzon, Nicole La-vallee, Bill Lewis, Henry Lewis, Daniel L'Heureux, Leo McCarthy, Matthews family, Lisa Mottala, Sandra Neargaard, Alice Nobert, John Odgren, Ray Odgren, Muriel Perro, Waldo Pierce, Linda Sevier, Pastor Andrew Simon, Thyra Steelman, Dagny Stevens, Dr. Preston Sturdevant, Ingrid Tornari, Justin Vernon, John Yursha

Serving Overseas: Travis Clements  
Hospitalized or other Health Care Facilities  
 Life Care: Astrid Johnson, Margaret Sjoberg  
 Millbury Health: Delores Bengtsson  
 Beaumont, Northboro: Betty Earley  
 Blaire House: David Varg  
 Overlook, Charlton: Pastor Harold Haas  
 Parsons Long-Term Health Care: Margaret Grout

DID YOU KNOW?

Did you know that one of Bethel member's has written a children's book? I'm delighted to introduce a new book written by a Bethel Preschool grad!

Kelly Bergman was inspired to write this story before her son was born and "Others, Just Like Me!" was published this year.

I've had the pleasure of reading this warm and delightful story at preschool and the children loved it – especially Kelly's use of a second language.

You can buy the book at Amazon.com. The cost is \$8.00. I give "Others, Just Like Me!" two big thumbs up. Congratulations Kelly! Forgot to mention that four children in the book are also Bethel Grads. Bev Sampson.

The office copied 15,012 copies from November 7 thru December 1<sup>st</sup>. That is less than a month period.

It takes 1,320 copies to produce two 3 page bulletins each week. And that is with no insert!

***You Are Cordially  
 Invited to  
 An Epiphany Open House  
 Sunday, January 8, 2012  
 4 to 6 pm  
 at  
 The Parsonage  
 92 Bryn Mawr Avenue  
 Auburn***

***Holiday Treats and appetizers will  
 be served with coffee, tea, and cider.  
 If you enjoy wine, beer, or cham-  
 pagne please bring your favorite  
 beverage. Please RSVP through  
 signing the sign up sheet in the Nar-  
 thex and join us!***

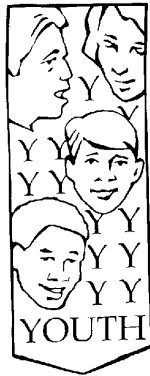
## YOUTH NEWS

### Contact Information:

Bethel's Home Page: [www.bethelauburn.org](http://www.bethelauburn.org)  
 Youth Group Website: [www.youthbethel.webs.com](http://www.youthbethel.webs.com)  
 Adam Hanks (Youth Program Leader):  
 Email: [arhanks1985@hotmail.com](mailto:arhanks1985@hotmail.com) Phone: 508-248-5097

**To Sign Up:** please check our info center in the office lobby or our web site as noted above!

**Volunteers Needed** - The Youth Committee is actively looking for anyone interested in working with the Youth Group. We are currently short on adult leadership and more is needed to build and grow our existing program. If you are interested please contact Adam Hanks, as noted above for information. Thank You.



**Mission Statement** - Attention all youth! The Youth Committee is looking to define the identity of the Youth Group by coming up with a mission statement. We need your help! This is your youth group and we need your input on what you are looking for from the Youth Group. See Adam Hanks if you have any questions.

**Participation Forms** - The 2011 - 2012 Youth Group Participation forms are available. Please see Adam Hanks or the website to pick one up! We need all youth who will participate in activities this year to complete one. They are completed on an annual basis. Thank You!

### January

1/6	Kid's Express* Concordia, Worcester	5:30pm-8:30pm
1/15	Worc. State Hospital. Worship Serv LIPY/Worcester State Hospital	8:30am-12:00pm
1/21	Game Night Bethel Auburn	6:00pm-9:00pm

\* Notes a service project for Confirmation students.

### SERVING YOU SUNDAYS

*Church Closer:* January- Joan Parker  
 Name of Jesus - January 1 (Color: White)

10:30 am

Acolytes - Kyle Belmonte Lector - Carolyn Henry Ushers - To be scheduled Coffee Maker - Sue Johnson Liturgical Asst. - Sue Johnson	Deacons - To be scheduled Baker - Jane Bercier Coffee Cleanup - Jane Bercier Greeters: - Fred & Cyndi Carley Candle Filler - Carolyn Salmonson
--	--

### Baptism of Our Lord- January 8 (Color: White)

8:00 am

Acolytes - B. Roberts & D. Gleason Lector - Helen Trilligan Ushers - To be scheduled Greeters - D. Lewis & M. Nelson	Altar Guild - To be scheduled Deacons - To be scheduled Baker - Deb Thompson Liturgical Asst. - Karen Carlson
---	--

10:30 am

Acolytes - Joe Belmonte Lector - Judy Hodgerney Ushers - To be scheduled Coffee Maker - Sue Johnson Liturgical Asst. - Sue Johnson	Deacons - To be scheduled Baker - Anita Haynes Coffee Cleanup - Anita Haynes Greeters: - A. Hanks & K. O'Mara
--	--

### Epiphany 2 - January 15 (Color: Green)

8:00 am

Acolytes - C. Rapoza & N. Shiner Lector - Thomas Gleason Ushers - To be scheduled Greeters - Bev & Alden Sampson	Altar Guild - To be scheduled Deacons - To be scheduled Baker - Doris Lewis Liturgical Asst. - Terry Hamilton
---	--

9:15 am

Acolytes - P. Plona & S. Cavanaugh Lector - Melissa Coffey Ushers - To be scheduled Greeters - U. Bergman & L. Fenby	Deacons - To be scheduled Baker - Allayne Nelson Liturgical Asst. - Melissa Coffey Candle Filler - Karen Baril
---	---

10:30 am

Acolytes - Catie Cormier Lector - Joan Parker Ushers - To be scheduled Coffee Maker - Sue Johnson Liturgical Asst. - Larry Stidsen	Deacons - To be scheduled Baker - Barbara McCarthy Coffee Cleanup - Jane Bercier Greeters: - P. Becker & R. Briggs
--	---

### Epiphany 3 - January 22 (Color: Green)

8:00 am

Acolytes - M. Rapoza & L. Thunberg Lector - Patti Benvenuti Ushers - To be scheduled Greeters - D. Thompson & N. Bjorkman	Altar Guild - To be scheduled Deacons - To be scheduled Baker - Lisa Ferreira Liturgical Asst. - Grover Gentry
--	---

9:15 am

Acolytes - H. Coomber & A. Cook Lector - Tonya Matthews Ushers - To be scheduled Greeters - H. Talbot & D. Winch	Deacons - To be scheduled Baker - Lee Fenby Liturgical Asst. - Karen Carlson
---	--

10:30 am

Acolytes - Adam Hanks Lector - Judy Sampson Ushers - To be scheduled Coffee Maker - Sue Johnson Liturgical Asst. - Catie Cormier	Deacons - To be scheduled Baker - Pam Evers Coffee Cleanup - Anita Haynes Greeters: - Linda & Dave Fabrizius
--	---

### Epiphany 4 - January 29 (Color: Green)

8:00 am

Acolytes - E. Kozlowski & B. Courteau Lector - Shirley Cummins Ushers - To be scheduled Greeters - S. Cummins & D. Hultin	Altar Guild - To be scheduled Deacons - To be scheduled Baker - Nicole Ferreira Liturgical Asst. - Adam Hanks
--	--

9:15 am

Acolytes - R. Matthews & J. Carbonneau Lector - Catie Cormier Ushers - To be scheduled Greeters - C. Cormier & K. O'Mara	Deacons - To be scheduled Baker - Hannah Coomber Liturgical Asst. - Chris Belmonte Candle Filler - Sue Johnson
---	---

10:30 am

Acolytes - Kyle Belmonte Lector - Phil Becker Ushers - To be scheduled Coffee Maker - Sue Johnson Liturgical Asst. - Joan Parker	Deacons - To be scheduled Baker - Sherry Gaspar Coffee Cleanup - Jane Bercier Greeters: - L. Crystoff & H. Malvey
--	--

Bethel Lutheran Church, 90 Bryn Mawr Ave., Auburn, Ma., 01501  
 ADDRESS SERVICE REQUESTED  
 RETURN SERVICE CORRECTED

Permit No. 8 -AUBURN, MASSACHUSETTS  
 U.S. Postage Paid  
 Non-Profit Organization

## TIME SENSITIVE MAIL PLEASE DO NOT DELAY

### JANUARY AT BETHEL

Church Office Hours: Mon. through Fri.: 9:00am to 2:00pm  
 Nursery School Hours: Mon through Fri.: 9:00am - 12:00pm  
 Mon., Wed. & Fri. 11:30am – 2:00pm Lunch Bunch

- |      |  |  |  |
|------|--|--|--|
| 1/1  | <b>10:30am only – Name of Jesus Worship</b>  |  |  |
| 1/2  | <b>Office Closed</b>   |  |  |
|      | 5:00pm Alcoholics' Anonymous   |  |  |
|      | <b>6:15pm Faith Works Rehearsal</b>  |  |  |
|      | <b>6:45pm Men of Bethel/Women of Bethel Reh.</b>   |  |  |
|      | 7:00pm Overeaters Anonymous  |  |  |
|      | <b>7:30pm Bethel Singers Rehearsal</b>   |  |  |
| 1/3  | 5:00pm Alcoholics' Anonymous   |  |  |
| 1/4  | <b>1:00pm Living with Grief Meeting</b>  |  |  |
|      | 5:00pm Alcoholics' Anonymous   |  |  |
|      | <b>5:30pm Wednesday Worship</b>  |  |  |
|      | <b>6:30pm Children's Choir</b>   |  |  |
|      | 7:30pm Alonon  |  |  |
| 1/5  | <b>5:00pm Bell Choir Rehearsal Group 1</b>   |  |  |
|      | 6:00pm Daisy Troop #30197  |  |  |
|      | 6:45pm Girl Scouts Troop #11040 & #30413   |  |  |
|      | 7:30pm Alcoholics' Anonymous   |  |  |
| 1/6  | 5:00pm Alcoholics' Anonymous   |  |  |
| 1/7  | <b>9:00am Bell Choir Rehearsal Group 2</b>   |  |  |
|      | 10:30am Sunday School Pageant Rehearsal  |  |  |
|      | 11:00am Alcoholics' Anonymous  |  |  |
| 1/8  | <b>8:00, &amp; 10:30am – Baptism of Our Lord Worship</b>   |  |  |
|      | <b>Blood Pressure Clinic after each service</b>  |  |  |
|      | <b>9:15am Sunday School Pageant Rehearsal</b>  |  |  |
|      | <b>11:30am Worship &amp; Music Committee Meeting</b>   |  |  |
|      | <b>3:00pm Boy Scout Troop</b>  |  |  |
|      | <b>4:00pm Open House at Parsonage (till 6:00pm)</b>  |  |  |
|      | <b>5:00pm Bell Choir Rehearsal Group 2</b>   |  |  |
|      | <b>6:30pm 6<sup>th</sup>, 7<sup>th</sup> &amp; 8<sup>th</sup> Grade Confirmation Class</b>                 |  |  |
| 1/9  | 5:00pm Alcoholics' Anonymous   |  |  |
|      | <b>6:15pm Faith Works Rehearsal</b>  |  |  |
|      | <b>6:45pm Men of Bethel/Women of Bethel Reh.</b>   |  |  |
|      | 7:00pm Overeaters Anonymous  |  |  |
|      | <b>7:30pm Bethel Singers Rehearsal</b>   |  |  |
| 1/10 | 5:00pm Alcoholics' Anonymous   |  |  |
|      | <b>6:00pm Men's Group</b>  |  |  |
|      | <b>DOLs at "Oxford Casual Dining" Oxford</b>   |  |  |
| 1/11 | 5:00pm Alcoholics' Anonymous   |  |  |
|      | <b>5:30pm Wednesday Worship</b>  |  |  |
|      | <b>6:30pm Children's Choir</b>   |  |  |
|      | 7:30pm Alonon  |  |  |
| 1/12 | <b>5:00pm Bell Choir Rehearsal Group 1</b>   |  |  |
|      | <b>6:30pm Council Meeting</b>  |  |  |
|      | 6:45pm Girl Scouts Troop #11040 & #30413   |  |  |
|      | 7:30pm Alcoholics' Anonymous   |  |  |
| 1/13 | <b>10:30pm Visitation Team Meeting</b>   |  |  |
|      | 4:00pm Daisy Troop #11039  |  |  |
|      | 5:00pm Alcoholics' Anonymous   |  |  |
| 1/14 | <b>9:00am Bell Choir Rehearsal Group 2</b>   |  |  |
|      | 11:00am Alcoholics' Anonymous  |  |  |
| 1/15 | <b>8:00, 9:15 &amp; 10:30am – Epiphany 2 Worship</b>   |  |  |
|      | <b>9:15am Education Hour</b>   |  |  |
|      | <b>3:00pm Boy Scout Troop</b>  |  |  |
|      | <b>6:30pm 6<sup>th</sup>, 7<sup>th</sup>, 8<sup>th</sup> &amp; 9<sup>th</sup> Grade Confirmation Class</b> |  |  |
| 1/16 | 5:00pm Alcoholics' Anonymous   |  |  |
|      | <b>6:15pm Faith Works Rehearsal</b>  |  |  |
|      | <b>6:45pm Men of Bethel/Women of Bethel Reh.</b>   |  |  |
|      | 7:00pm Overeaters Anonymous  |  |  |
|      | <b>7:30pm Bethel Singers Rehearsal</b>   |  |  |
| 1/17 | 5:00pm Alcoholics' Anonymous   |  |  |
|      | <b>6:00pm Christian Ed. Meeting</b>  |  |  |
| 1/18 | 5:00pm Alcoholics' Anonymous   |  |  |
|      | <b>5:30pm Wednesday Worship</b>  |  |  |
|      | <b>6:30pm Children's Choir</b>   |  |  |
|      | <b>7:00pm Living with Grief Meeting</b>  |  |  |
|      | 7:30pm Alonon  |  |  |
| 1/19 | <b>5:00pm Bell Choir Rehearsal Group 1</b>   |  |  |
|      | 6:45pm Girl Scouts Troop #11040 & #30413   |  |  |
|      | 7:30pm Alcoholics' Anonymous   |  |  |
| 1/20 | 5:00pm Alcoholics' Anonymous   |  |  |
| 1/21 | <b>9:00am Bell Choir Rehearsal Group 2</b>   |  |  |
|      | 11:00am Alcoholics' Anonymous  |  |  |
| 1/22 | <b>8:00, 9:15 &amp; 10:30am – Epiphany 3 Worship</b>   |  |  |
|      | <b>9:15am Education Hour</b>   |  |  |
|      | <b>3:00pm Boy Scout Troop</b>  |  |  |
| 1/23 | 5:00pm Alcoholics' Anonymous   |  |  |
|      | <b>6:15pm Faith Works Rehearsal</b>  |  |  |
|      | <b>6:45pm Men of Bethel/Women of Bethel Reh.</b>   |  |  |
|      | 7:00pm Overeaters Anonymous  |  |  |
|      | <b>7:30pm Bethel Singers Rehearsal</b>   |  |  |
| 1/24 | 5:00pm Alcoholics' Anonymous   |  |  |
|      | <b>6:00pm Youth Committee Meeting</b>  |  |  |
| 1/25 | 5:00pm Alcoholics' Anonymous   |  |  |
|      | <b>5:30pm Wednesday Worship</b>  |  |  |
|      | <b>6:30pm Children's Choir</b>   |  |  |
|      | 7:30pm Alonon  |  |  |
| 1/26 | <b>5:00pm Bell Choir Rehearsal Group 1</b>   |  |  |
|      | 7:30pm Alcoholics' Anonymous   |  |  |
| 1/27 | 5:00pm Alcoholics' Anonymous   |  |  |
| 1/28 | 11:00am Alcoholics' Anonymous  |  |  |
| 1/29 | <b>8:00, 9:15 &amp; 10:30am – Epiphany 4 Worship</b>   |  |  |
|      | <b>9:15am Education Hour</b>   |  |  |
|      | <b>11:30am Annual Meeting</b>  |  |  |
|      | <b>3:00pm Boy Scout Troop</b>  |  |  |
| 1/30 | 5:00pm Alcoholics' Anonymous   |  |  |
|      | <b>6:15pm Faith Works Rehearsal</b>  |  |  |
|      | <b>6:45pm Men of Bethel/Women of Bethel Reh.</b>   |  |  |
|      | 7:00pm Overeaters Anonymous  |  |  |
|      | <b>7:30pm Bethel Singers Rehearsal</b>   |  |  |
| 1/31 | 5:00pm Alcoholics' Anonymous   |  |  |